

All stainless steel safety pressure gauges according to EN 837-1/S3 with or without liquid filling

Nominal sizes ND 63

Connection position bottom



Description

The all stainless steel pressure gauges are ideal for the hard conditions and the resulting high demands on pressure measurement in production facilities in chemical industry and other comparable branches. Resistance to aggressive media and environments is achieved by using high-grade materials such as stainless steel both for the measuring system and the case.

The glycerine filling provides wear-protection for the measuring system through damping, should pulsating pressures and mechanical vibrations occur. The measuring system is of accuracy class 1.6, has overrange protection amounting to 1.3 times the max. rating and can be loaded up to the full scale value.

The safety execution of the pressure gauges comprises a burst-proof solid front between bourdon tube and window, a laminated safety glass as well as a blow-out back (according to EN 837-1/S3).

Pressure gauges with glycerine filling are equipped with a compensation diaphragm. This diaphragm avoids a pressure rise in the case that is due to temperature bound volume expansion of the liquid filling, thus avoiding indicated errors.

Features

- o Corrosion resistant stainless steel measuring system
- o Resistant to chemicals
- o Rugged construction
- o Fulfills highest safety requirements to EN 837-1/S3
- o Solid front between measuring system and window
- o Vibration-free display and long service-life through liquid filling

Ranges

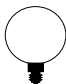

0 ... 1 bar to 0 ... 1000 bar

Applications

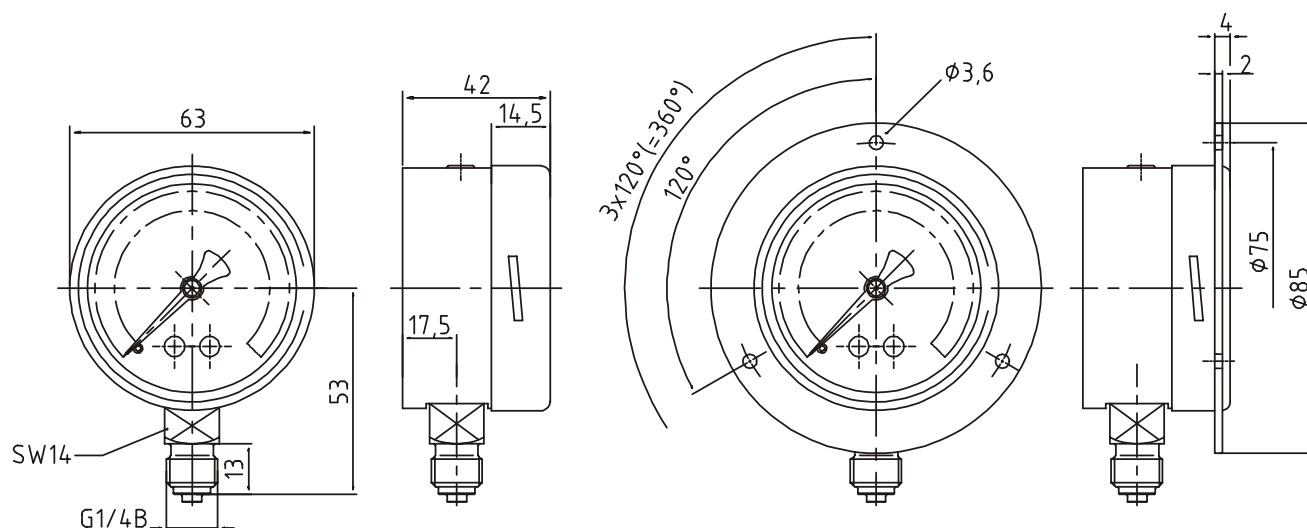
Processing technology in chemical industry, pharmacy, machine and apparatus construction

Models: 2105, 2106

Technical data

Models	2105	2106	Options
Nominal size	63		
Symbol			
Accuracy class	1.6 to EN 837-1		
Range	0 ... 1 bar to 0 ... 1000 bar negative or positive or negative and positive gauge pressure		
Application	Constant load : 3/4 x full scale value Alternating load : 2/3 x full scale value short-time: full scale value		
Case	Stainless steel 1.4301 with blow-out back and solid front		Front mounting bracket
Bezel	Stainless steel 1.4301 bayonet ring		
Window	Laminated safety glass		
Dial	Aluminium, white, scale and imprint black		
Pointer	Aluminium, black		
Movement	Stainless steel		1.4571
Measuring element	Stainless steel 316 L Bourdon tube up to 60 bar, above 100 bar □ helical tube		
Connection - position - thread	Stainless steel 316 L radial bottom G 1/4 B		
Temperatures - Medium - Ambient	Tmin. -20°C, Tmax. 100°C Tmin. -40°C, Tmax. 60°C		
Temperature drift	0.4%/10K if deviation from normal temperature 20°C		
Liquid filling	none	glycerine	200°C (without filling)
Protection	IP 65 to EN 60 529 / IEC 529		
Orifice			
Weight	0.200 kg	0.270 kg	

Dimensions



Model: 2105 / 2106

Model: 2105 / 2106 with front flange

Modifications reserved