



18.600

OEM Pressure Transmitter

- ▶ silicon sensor or thickfilm ceramic sensor
- ▶ output signal
4 ... 20 mA / 2-wire
option: 0 ... 10 V / 3-wire
- ▶ accuracy:
0.25% FSO BFSL
(0.5% FSO IEC 60770)
- ▶ nominal pressure ranges from
0 ... 250 mbar up to 0 ... 10 bar



18.600

OEM Pressure Transmitter

Technical Data

Input pressure range											
Nominal pressure gauge	[bar]	-1...0	0.25	0.4	0.6	1	1.6	2.5	4	6	10
Permissible overpressure	[bar]	3	1	1	3	3	7	7	12	12	25

Output signal / Supply			
Standard	2-wire:	4 ... 20 mA	/ $V_s = 12 \dots 36 V_{DC}$
Option	3-wire:	0 ... 10 V	/ $V_s = 14 \dots 36 V_{DC}$

Performance		
Accuracy	$\leq \pm 0.5\% \text{ FSO}$	(BFSL: $\leq \pm 0.25\% \text{ FSO}$)
Permissible load	current 2-wire: voltage 3-wire	$R_{max} = [(V_s - V_{smin}) / 0.02] \Omega$ $R_{min} = 10 \text{ k}\Omega$
Influence effects	supply: 0.05 % FSO / 10 V	/ load: 0.05 % FSO / k Ω

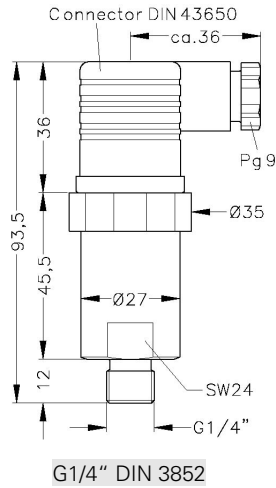
Thermal errors (Offset and Span)				
Nominal pressure P_N	-1 ... 0 bar	$\leq 0.4 \text{ bar}$	$\leq 1 \text{ bar}$	$> 1 \text{ bar}$
Tolerance band	$\leq \pm 0.75\% \text{ FSO}$	$\leq \pm 1\% \text{ FSO}$	$\leq \pm 0.75\% \text{ FSO}$	$\leq \pm 0.3\% \text{ FSO} / 10 \text{ K}$
TC, average	$\pm 0.12\% \text{ FSO} / 10 \text{ K}$	$\pm 0.18\% \text{ FSO} / 10 \text{ K}$	$\pm 0.12\% \text{ FSO} / 10 \text{ K}$	$\pm 0.12\% \text{ FSO} / 10 \text{ K}$
in compensated range		0 ... 60 °C		-25 ... 85 °C

Mechanical stability			
Vibration	10 g RMS (20 ... 2000 Hz)	Shock	100 g / 11 ms

Permissible temperatures					
Medium	-25 ... 90 °C	Electronics / environment	-25 ... 85 °C	Storage	-40 ... 125 °C

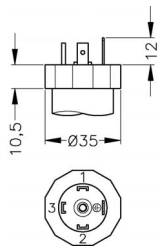
Mechanical connection

Standard



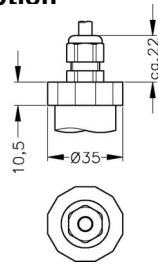
Electrical connection

Standard



DIN 43650 (IP 65)

Option



Cable gland (IP 67)¹

Materials

Pressure port / Housing	aluminium, black anodized
Seals (media wetted)	FKM
Sensor	stainless steel 1.4305 (303), RTV, ceramics Al ₂ O ₃ 96 %, silicon
Media wetted parts	pressure port, seals, sensor

Miscellaneous

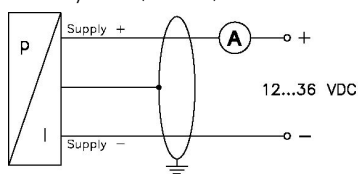
Suitable for following media	non-aggressive gases, slightly polluted air, nitrogen
------------------------------	---

Pin configuration

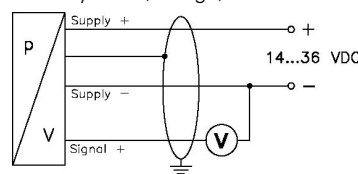
Electrical connection		DIN 43650	cable colour (DIN 47100)
2-wire-system	Supply +	1	white
	Supply -	2	brown
3-wire-system	Ground	ground contact	yellow / black
	Supply +	1	white
	Supply -	2	brown
	Signal +	3	green
	Ground	ground contact	yellow / black

Wiring diagrams

2-wire-system (current)



3-wire-system (voltage)



¹ different cable types and lengths available; standard: 2m PVC cable (without ventilation tube), optionally cable with ventilation tube

Fax: +49 (0) 92 35 / 98 11 -11

Ordering code 18.600

18.600 - - - - -

Input		[bar]																			
	0,25	2	5	0	0																
	0,4	4	0	0	0																
	0,6	6	0	0	0																
	1,0	1	0	0	1																
	1,6	1	6	0	1																
	2,5	2	5	0	1																
	4	4	0	0	1																
	6	6	0	0	1																
	10	1	0	0	2																
	-1 ... 0	X	1	0	2																
	customer	X	X	X	X																
Output																					
	4 ... 20 mA / 2-wire					1															
	0 ... 10 V / 3-wire					3															
Electrical Connection																					
	Male and female plug DIN 43650					1	0	0													
	Cable gland incl. Cable ¹					4	0	0													
	customer					X	X	X													
Mechanical Connection																					
	G1/4" DIN 3852						3	0	0												
	customer						X	X	X												
Special version																					
	standard																		0	0	0
	customer																		X	X	X

¹ different cable types and lengths deliverable, standard: 2 m PVC cable (without ventilation tube), optionally cable with ventilation tube

